



GMG ProofMedia:

The fundamental element of your
Complete Proofing Solution





Three reasons to choose GMG ProofMedia

GMG provides a complete proofing solution, and GMG ProofMedia is a fundamental element of this color management system

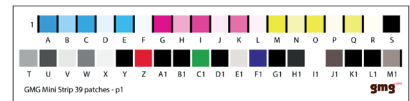
1

- With high quality GMG proofing media, GMG software, and a specified proofing printer, GMG is the leading company serving the worldwide market with a complete proofing system.
- This solution provides accurate color results, certified by FOGRA, GRACoL and Japan Color, and acknowledged by a high number of brand owners, high-end print service providers, pre-press and printing houses worldwide.
- We have a large ProofMedia portfolio of various qualities and widths, ranging from 13" - 44".

GMG ProofMedia enables you to get the most accurate spot color output from your GMG software

2

- When combined with GMG software, GMG ProofMedia accurately represents 99.8% of Pantone® colors. This enables you to print a wider color gamut – it covers the demands of almost all customers' spot color output needs, and is ideal for packaging printing.
- Additionally, GMG ProofMedia premium provides a highly accurate color simulation, generated from the measurement of just a few patches with the patented GMG OpenColor mini-strip. This makes the proofing process far less time consuming.



GMG ProofMedia has a superior coating that guarantees the quality color output

3

- GMG ProofMedia delivers consistent quality across batches over time, meaning reliable color results, and minimal difference between production batches for less wastage and more press up-time.
- Inkjet droplets remain sharp on the surface of GMG ProofMedia. This enables the printing of high resolution images, so you get a closer visual comparison with the end product.

It's all in the process

GMG ProofMedia is the superior media on the market due to its tailor-made and rigorously-tested manufacturing process:

PULPING

FSC®-certified pulp is produced to make the paper base for GMG ProofMedia products. This means that all GMG ProofMedia products come from responsibly-managed forests where trees are replaced or allowed to regenerate naturally.



The mark of responsible forestry
FSC® C131362



EXTRUSION

The surface of GMG proofing paper is produced to best match the primary categories of production stock; Quality PE layers are used to form the surface of GMG's semi-matte and glossy products. GMG ProofMedia is then printed with a distinguishing back stamp, so your customers know the proof is guaranteed to have GMG's quality.

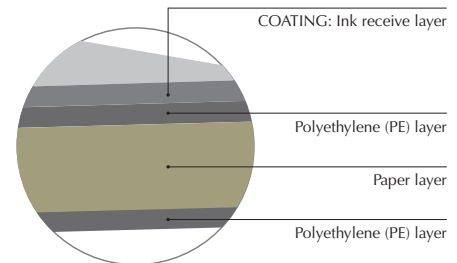


COATING

GMG's coating layer is unique

GMG proofing media coating is developed according to GMG's exacting requirements. It has been tested with GMG software to allow the largest color gamut output and most accurate color representation on the market.

Structure



CONVERSION AND PACKAGING

At the final stage, GMG proofing paper is converted into rolls and packed into specially-designed GMG boxes, which open on the long end to allow easy unpacking, and are built to avoid transportation damage. GMG ProofMedia packaging clearly differentiates product types, such as OBA or non-OBA products, to avoid errors due to loading the incorrect paper.

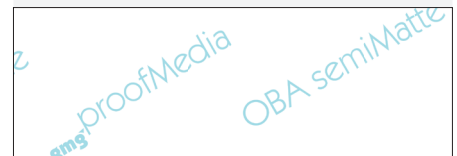


GMG ProofMedia product options

	Weight	Proofing certification
SemiMatte For multi-printing conditions simulation – packaging, magazine and brochures		
GMG ProofMedia premium semiMatte 250	250 g/m2	FOGRA39, FOGRA51, PC1 according to ISO 12647-2:2013
GMG ProofPaper semiMatte light	190 g/m2	FOGRA39, FOGRA51, PC1 according to ISO 12647-2:2013
Gloss For spot varnish, gloss labels and photographic purposes		
GMG ProofMedia premium gloss 250	250 g/m2	FOGRA39, FOGRA51, PC1 according to ISO 12647-2:2013
Matte For cardboard, newspapers and paper bags		
GMG ProofMedia studio OBA matte 150	150 g/m2	FOGRA47, FOGRA52 and PC5 according to ISO 12647-2:2013
GMG ProofMedia studio newspaper 76	76 g/m2	FOGRA47, IFRA26
GMG ProofPaper matte 140	140 g/m2	FOGRA47, FOGRA52 and PC5 according to ISO 12647-2:2013
OBA GMG ProofMedia OBA products are designed to simulate optical brightening agents for all printing industry segments on matte and semi-matte finishes.		
GMG ProofMedia premium OBA semiMatte 250	250 g/m2	FOGRA39, FOGRA51, PC1 according to ISO 12647-2:2013

Essentials for an ISO contract proof

The essential elements that form a contract proof are information on the proofing system, colorants, printing substrate, the printing condition to be simulated, color management profiles used and the date. In order for the proof to constitute a contract proof, the proofing media type must match the one stated – you can check the back stamp to make sure your contract proof is printed on GMG media. If you are using GMG software, this works optimally with GMG media to form the best possible color match.



GMG ProofMedia is climate neutral

Through its collaboration with ClimatePartner, and the support of its sustainable projects, GMG offsets all carbon emissions generated by its production process. These projects include the preservation of tropical forest in Kibale National Park, Uganda, and the reduction of greenhouse gases in Gangakhed, India, through the use of sugarcane biomass.



GMG Americas L.P., 120 Industrial Park Rd., Hingham, MA 02043, USA
Tel. +1 781 740-4077 infoamericas@gmgcolor.com